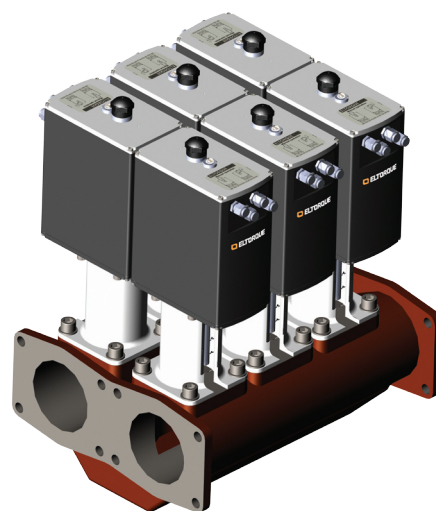


MT Series MULTI-TURN ACTUATOR

COMPACT QUALITY

Eltorque MT Series is an electrical multi-turn actuator suitable for new installation and retrofit on Rolls-Royce/Ulstein valve manifolds.

ELTORQUE offers a high level of precision in the control of valves. Excellent controlling possibilities, low cost of installation and operation, and no need of maintenance make ELTORQUE the future solution.



FEATURES:

MT50 & MT150:

- Multi-turn valve positioning and control
- Connection to multi-turn valves with rising stem
- Material: corrosion protected aluminium
- Easy retro-fit on manual valves
- Control interfaces: CANopen and Digital
- Configurable torque and speed

MT50:

- Max torque: 50 Nm
- Valve range: ND50, ND80 & ND100
- Minimum closing time:
 - ND50: 22 s (5 turns)
 - ND80: 30 s (7 turns)
 - ND100: 35 s (8,5 turns)

MT150:

- Max torque: 150 Nm
- Valve range: ND125 & ND150
- Minimum closing time:
 - ND125: 50 s (14 turns)
 - ND150: 60 s (16 turns)

