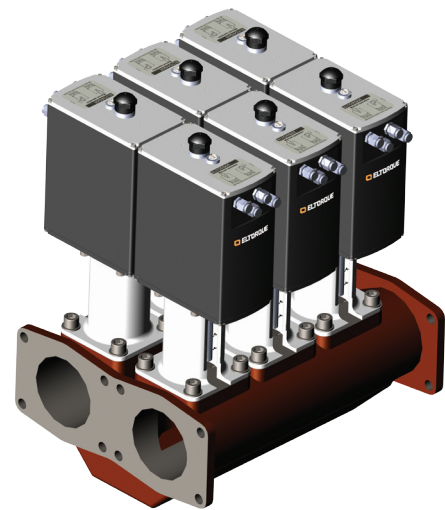


MT Series MULTI-TURN ACTUATOR

COMPACT QUALITY

Eltorque MT Series are electrical multi-turn actuators suitable for new installation and retrofit on Rolls-Royce/Ulstein valve manifolds.

ELTORQUE offers a high level of precision in the control of valves. Excellent controlling possibilities, low cost of installation and operation, and no need of maintenance make ELTORQUE the future solution.



FEATURES:

MT50 & MT150:

- Multi-turn valve positioning and control
- Connection to multi-turn valves with rising stem
- Material: corrosion protected aluminium
- Easy retro-fit on manual valves
- Control interfaces: CANopen and Digital
- Configurable torque and speed
- Easy commissioning
- Savings on installation
- Compact design
- Maintenance free actuator
- Full valve control with positioning on IAS
- Low power consumption
- Manual emergency override as standard
- High efficiency, green solution

